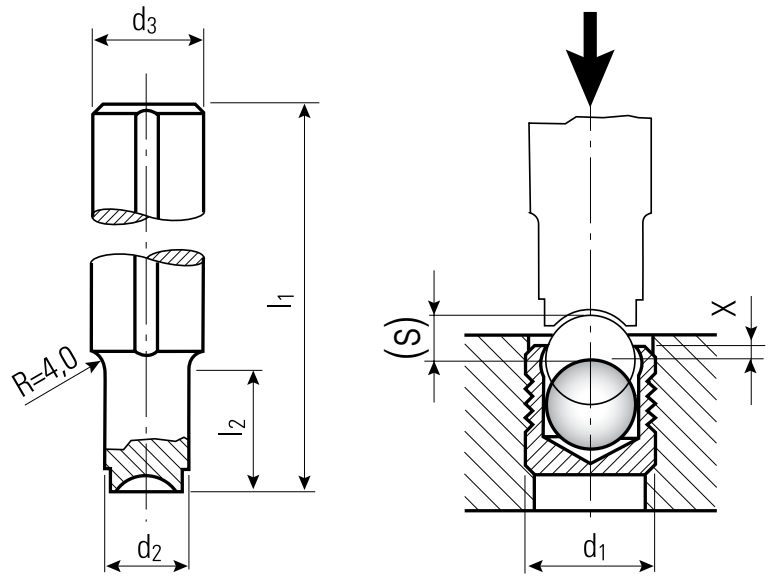


KOENIG EXPANDER® SETTING TOOLS

Series MB

Material:

Tool Steel, Heat Treated,
Hardness Approx. HRC 50



Part Number	d ₁ Expander	d ₃ -h9	l ₁	d ₂	l ₂	x ±0.2	(s) ~ Ref.	Weight in gram/pcs.
MB 030	3.0	10	100	2.8	10	0.4	1.2	55
MB 040	4.0	10	100	3.8	10	0.2	1.5	55
MB 050	5.0	10	100	4.8	12	0.4	1.9	55
MB 060	6.0	10	100	5.8	15	0.4	2.0	55
MB 070	7.0	10	100	6.8	18	0.4	3.0	55
MB 080	8.0	10	100	7.8	20	0.3	3.5	55
MB 090	9.0	14	100	8.8	22	0.4	4.0	120
MB 100	10.0	14	100	9.8	25	0.4	4.5	120
MB 120	12.0	14	150	11.7	30	0.4	5.5	180
MB 140	14.0	20	150	13.7	35	0.4	6.35	350
MB 160	16.0	20	150	15.7	40	0.6	7.0	350
MB 180	18.0	20	150	17.7	45	0.6	8.0	350
MB 200	20.0	25	150	19.7	50	0.8	9.0	550
MB 220	22.0	25	150	21.7	55	0.8	10.0	550

Dimensions in millimeters
North American customers please refer to page 32

RECOMMENDED SETTING EQUIPMENT FOR SERIES MB

EXPRESS 3000	Hydropneumatic Table Press	See page 64 for more information
EXPRESS 5000	Hydropneumatic Table Press	See page 64 for more information