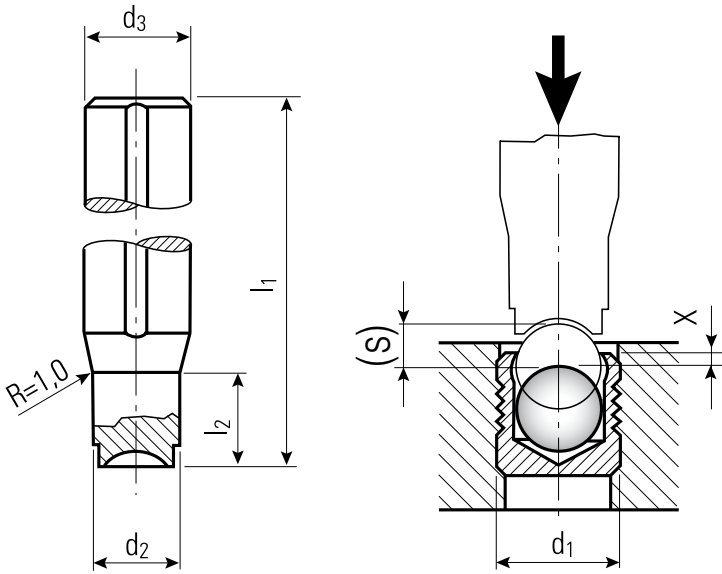


# KOENIG EXPANDER® SETTING TOOLS

## Series MB Inch

**Material:**  
Tool Steel, Heat Treated,  
Hardness Approx. HRC 50



Part Number	d <sub>1</sub> Expander	d <sub>3</sub> -h9	l <sub>1</sub>	d <sub>2</sub>	l <sub>2</sub>	x 0 -0.012	(s) ~ Ref.	Weight in gram/pcs.
MB 093A	0.093	0.394	3.94	0.082	0.137	0.012	0.031	55
MB 125A	0.125	0.394	3.94	0.117	0.137	0.012	0.047	55
MB 156A	0.156	0.394	3.94	0.148	0.137	0.012	0.059	55
MB 187A	0.187	0.394	3.94	0.180	0.137	0.012	0.079	55
MB 218A	0.218	0.394	3.94	0.211	0.400	0.012	0.094	55
MB 250A	0.250	0.394	3.94	0.242	0.400	0.012	0.109	55
MB 281A	0.281	0.394	3.94	0.273	0.400	0.012	0.118	55

Dimensions in Inches  
North American customers please refer to page 34

### RECOMMENDED SETTING EQUIPMENT FOR SERIES MB

<b>EXPRESS 3000</b>	Hydropneumatic Table Press	See page 64 for more information
<b>EXPRESS 5000</b>	Hydropneumatic Table Press	See page 64 for more information