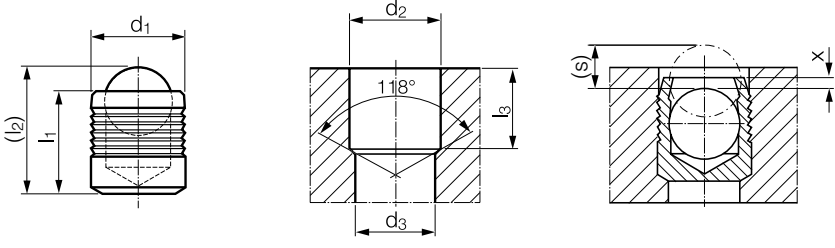




KOENIG EXPANDER® SEALING PLUGS

Series CV 588 Inch Short

Series CV 588



Material:
 Sleeve: Stainless Steel, AISI 316, ASTM A580, Passivate, QQ-P-35C
 Ball: Stainless Steel, AISI 316, Wax Film Lubrication (Diameter Dependant)

Part Number	d ₁	l ₁	(l ₂) ~ Ref.	d ₂ +0.004 0	d ₃ max.	l ₃ min.	x ±0.004	(s) ~ Ref.	Packaging Unit*	Weight in gram/pcs.
CV 588-125S	0.125	0.125	0.16	0.1250	0.100	0.113	0.007	0.042	1000	0.18
CV 588-156S	0.156	0.125	0.17	0.1562	0.130	0.113	0.000	0.040	1000	0.29
CV 588-187S	0.187	0.187	0.24	0.1875	0.160	0.170	0.010	0.066	1000	0.60
CV 588-218S	0.218	0.187	0.25	0.2187	0.190	0.170	0.000	0.063	1000	0.81
CV 588-250S	0.250	0.225	0.30	0.2500	0.220	0.196	0.000	0.083	1000	1.20
CV 588-281S	0.281	0.255	0.35	0.2812	0.250	0.233	0.000	0.091	1000	1.77

Dimensions in inches
 *Standard pack quantities may vary by sales organization
 Not all items in stock – MOQ and production lead times may apply

PRESSURE PERFORMANCE

Series CV 588 Inch Short	①	③	④	⑥	⑧
	ETG-100 / 44SMn28 AISI 1144	EN 1563: GJS-600-3 ASTM A536: 80-60-03	EN 1563: GJS-450-10 ASTM A536: 65-45-12	AICu4Mg1 / EN AW-2024-T3 AA: 2024 T4/T6*	G-AISI7Mg / EN-AC-42100 ASTM/UNS: A356
Base Material of the Installation					
Ø 0.125 – 0.281	560 bar / 8100 psi 250 bar / 3600 psi				

Proof Pressure Test - ⑥
Max. Allowable Working Pressure = Nominal Pressure
 *SFC KOENIG's North American Engineering Department utilizes 2024-T4/T6 as a test base material.