

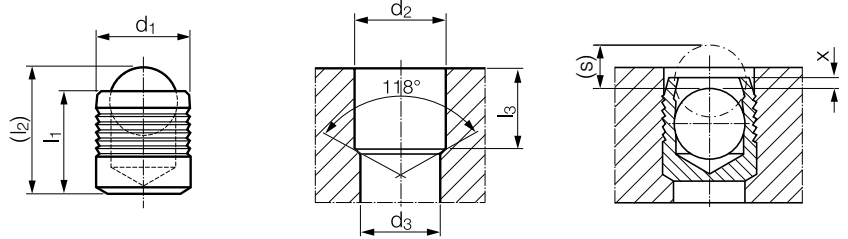
# KOENIG EXPANDER® SEALING PLUGS

## Series CV 173



**Material:**

Sleeve: Aluminum 2024-T4, QQ-A 225/6  
 Ball: Stainless Steel, AISI 302/304, Wax Film  
 Lubrication (Diameter Dependant)



Part Number	d <sub>1</sub>	l <sub>1</sub>	(l <sub>2</sub> ) ~ Ref.	d <sub>2</sub> +0.1 0	d <sub>3</sub> max	l <sub>3</sub> min.	x ±0.1	(s) ~ Ref.	Packaging Unit*	Weight in gram/pcs.
CV 173-030	3.0	3.18	4.1	3.0	2.3	2.9	0.2	1.0	1000	0.09
CV 173-040	4.0	4.00	5.2	4.0	3.3	3.8	0.2	1.4	1000	0.20
CV 173-050	5.0	5.50	7.0	5.0	4.3	5.3	0.2	1.9	1000	0.44
CV 173-060	6.0	6.50	8.6	6.0	5.3	6.3	0.2	2.3	1000	0.78
CV 173-070	7.0	7.50	10.1	7.0	6.2	7.3	0.2	2.8	1000	1.28
CV 173-080	8.0	8.50	11.7	8.0	7.2	8.3	0.2	3.4	1000	1.96
CV 173-090	9.0	10.00	13.7	9.0	8.2	9.8	0.2	3.7	1000	2.88
CV 173-100	10.0	11.00	15.2	10.0	9.2	10.8	0.2	4.2	500	4.01
CV 173-120	12.0	13.00	18.0	12.0	11.0	12.8	0.2	5.1	250	7.06

Dimensions in millimeters

\*Standard pack quantities may vary by sales organization

Not all items in stock – MOQ and production lead times may apply

### PRESSURE PERFORMANCE

Series CV 173 mm	①	③	④	⑥	⑧
	ETG-100 / 44SMn28 AISI 1144	EN 1563: GJS-600-3 ASTM A536: 80-60-03	EN 1563: GJS-450-10 ASTM A536: 65-45-12	AlCu4Mg1 / EN AW-2024-T3 AA: 2024 T4/T6*	G-AISI7Mg / EN-AC-42100 ASTM/UNS: A356
Base Material of the Installation					
Ø 3 – 10				650 bar / 9400 psi <b>210 bar / 3000 psi</b>	
Ø 12				300 bar / 4300 psi <b>100 bar / 1500 psi</b>	

Proof Pressure Test - ©

**Max. Allowable Working Pressure = Nominal Pressure**

\*SFC KOENIG's North American Engineering Department utilizes 2024-T4/T6 as a test base material.