



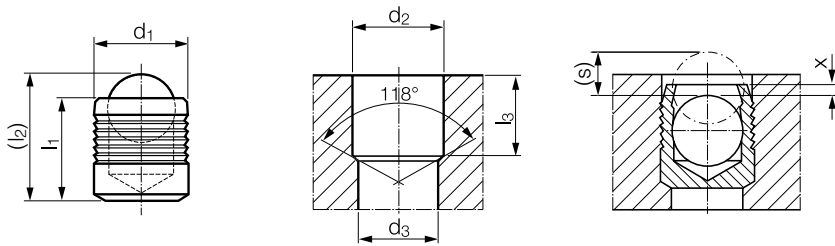
# KOENIG EXPANDER® SEALING PLUGS

## Series CV 173 Inch

Series CV 173

**Material:**

Sleeve: Aluminum 2024-T4, QQ-A 225/6  
 Ball: Stainless Steel, AISI 302/304, Wax Film  
 Lubrication (Diameter Dependant)



Part Number	d <sub>1</sub>	l <sub>1</sub>	(l <sub>2</sub> ) ~ Ref.	d <sub>2</sub> +0.004 0	d <sub>3</sub> max.	l <sub>3</sub> min.	x ±0.004	(s) ~ Ref.	Packaging Unit*	Weight in gram/pcs.
CV 173-156	0.156	0.158	0.21	0.1562	0.130	0.149	0.008	0.053	1000	0.19
CV 173-187	0.187	0.217	0.27	0.1875	0.160	0.208	0.010	0.066	1000	0.37
CV 173-218	0.218	0.217	0.28	0.2187	0.190	0.208	0.010	0.078	1000	0.55
CV 173-250	0.250	0.256	0.34	0.2500	0.220	0.247	0.010	0.094	1000	0.87
CV 173-281	0.281	0.296	0.40	0.2812	0.250	0.287	0.010	0.110	1000	1.60
CV 173-312	0.312	0.335	0.46	0.3125	0.281	0.326	0.010	0.129	1000	1.93
CV 173-343	0.343	0.394	0.52	0.3437	0.312	0.385	0.010	0.140	500	2.58
CV 173-375	0.375	0.394	0.54	0.3750	0.343	0.385	0.010	0.153	500	3.25
CV 173-406	0.406	0.434	0.59	0.4062	0.375	0.425	0.010	0.162	500	4.20
CV 173-437	0.437	0.512	0.68	0.4375	0.406	0.503	0.010	0.166	250	5.70

Dimensions in inches

\*Standard pack quantities may vary by sales organization

Not all items in stock – MOQ and production lead times may apply

### PRESSURE PERFORMANCE

Series CV 173 Inch	①	③	④	⑥	⑧
	ETG-100 / 44SMn28 AISI 1144	EN 1563: GJS-600-3 ASTM A536: 80-60-03	EN 1563: GJS-450-10 ASTM A536: 65-45-12	AICu4Mg1 / EN AW-2024-T3 AA: 2024 T4/T6*	G-AISI7Mg / EN-AC-42100 ASTM/UNS: A356
Base Material of the Installation					
Ø 0.156 – 0.437				650 bar / 9400 psi 210 bar / 3000 psi	

Proof Pressure Test - ⑧

**Max. Allowable Working Pressure = Nominal Pressure**

\*SFC KOENIG's North American Engineering Department utilizes 2024-T4/T6 as a test base material.