

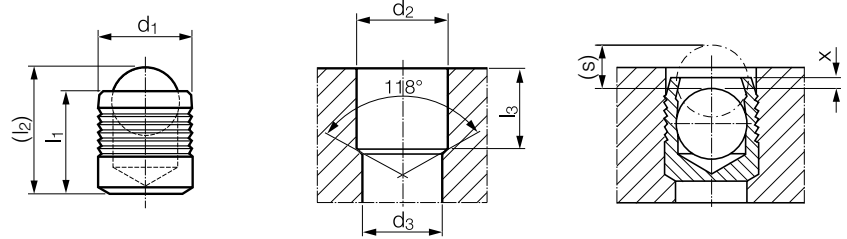
KOENIG EXPANDER® SEALING PLUGS

Series CV 173 Inch Short



Material:

Sleeve: Aluminum 2024-T4, QQ-A 225/6
 Ball: Stainless Steel, AISI 302/304, Wax Film
 Lubrication (Diameter Dependant)



Part Number	d ₁	l ₁	(l ₂) ~ Ref.	d ₂ +0.004 0	d ₃ max.	l ₃ min.	x ±0.004	(s) ~ Ref.	Packaging Unit*	Weight in gram/pcs.
CV 173-125S	0.125	0.125	0.16	0.1250	0.100	0.113	0.007	0.042	1000	0.10
CV 173-156S	0.156	0.125	0.17	0.1562	0.130	0.113	0.000	0.040	1000	0.15
CV 173-187S	0.187	0.187	0.24	0.1875	0.160	0.170	0.010	0.066	1000	0.33
CV 173-218S	0.218	0.187	0.25	0.2187	0.190	0.170	0.000	0.063	1000	0.46
CV 173-250S	0.250	0.225	0.30	0.2500	0.220	0.196	0.000	0.083	1000	0.76
CV 173-281S	0.281	0.255	0.35	0.2812	0.250	0.233	0.000	0.091	1000	1.08
CV 173-312S	0.312	0.280	0.39	0.3125	0.281	0.255	0.000	0.107	1000	1.52
CV 173-343S	0.343	0.307	0.43	0.3437	0.312	0.275	0.000	0.118	500	2.01
CV 173-406S	0.406	0.365	0.52	0.4062	0.375	0.308	-0.010	0.143	500	3.59

Dimensions in inches

*Standard pack quantities may vary by sales organization

Not all items in stock – MOQ and production lead times may apply

PRESSURE PERFORMANCE

Series CV 173 Inch Short	①	③	④	⑥	⑧
	ETG-100 / 44SMn28 AISI 1144	EN 1563: GJS-600-3 ASTM A536: 80-60-03	EN 1563: GJS-450-10 ASTM A536: 65-45-12	AlCu4Mg1 / EN AW-2024-T3 AA: 2024 T4/T6*	G-AISI7Mg / EN-AC-42100 ASTM/UNS: A356
Base Material of the Installation					
Ø 0.125 – 0.406				400 bar / 5800 psi 150 bar / 2100 psi	

Proof Pressure Test - ⑧

Max. Allowable Working Pressure = Nominal Pressure

*SFC KOENIG's North American Engineering Department utilizes 2024-T4/T6 as a test base material.