

KOENIG EXPANDER® SEALING PLUGS

Series MB 600

Sleeve Passivated per ASTM A967M-17



Material:

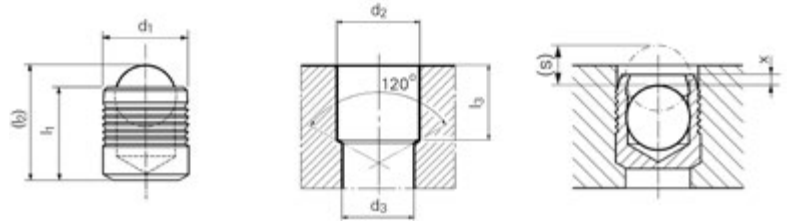
Sleeve: Stainless Steel 1.4305

Ball: Bearing Steel 1.4301

Important:

See installation instructions on pages 78–79

Installation requirements on page 73



Part Number	d ₁	l ₁	(l ₂) ~ Ref.	d ₂ +0.1 0	d ₃ max	l ₃ min.	x ±0.2	(s) ~ Ref.	Packaging Unit*	Weight in gram/pcs.
MB 600-030	3.0	3.6	4.6	3.0	2.2	3.4	0.4	1.2	1000	0.17
MB 600-040	4.0	4.0	5.1	4.0	3.3	3.8	0.2	1.5	1000	0.34
MB 600-050	5.0	5.5	7.1	5.0	4.3	5.3	0.4	2.0	1000	0.68
MB 600-060	6.0	6.5	8.6	6.0	5.3	6.3	0.4	2.5	500	1.18
MB 600-070	7.0	7.5	10.1	7.0	6.4	7.3	0.4	3.0	250	1.91
MB 600-080	8.0	8.5	11.6	8.0	7.4	8.3	0.3	3.5	250	2.86
MB 600-090	9.0	10.0	13.5	9.0	8.4	9.8	0.4	4.0	250	4.02
MB 600-100	10.0	11.0	15.1	10.0	9.4	10.8	0.4	4.5	250	5.50
MB 600-120	12.0	13.0	17.8	12.0	10.6	12.8	0.4	5.5	100	9.37
MB 600-140	14.0	15.0	20.5	14.0	12.7	14.5	0.4	6.35	100	14.81

Dimensions in millimeters

*Standard pack quantities may vary by sales organization

PRESSURE PERFORMANCE

Series MB 600 mm	①	②	③	⑤	⑥	⑦	⑧
	ETG-100 / 44SMn28 AISI 1144	C15Pb / 1.0403 ~ SAE 1015 (10L15)	EN 1563: GJS-600-3 ASTM A536: 80-60-03	EN 1561: G.JL-250 ASTM A48: NO.35	AlCu4Mg1 / EN AW-2024-T3 AA: 2024 T4/T6*	AlMgSiPb / EN AW-6012-T6 AA: 6012-T6	G-AlSi7Mg / EN-AC-42100 ASTM/UNS: A356
Base Material of the Installation							
∅ 3 – 10	1400 bar / 20300 psi 450 bar / 6500 psi				1200 bar / 17400 psi 380 bar / 5500 psi		
∅ 12 – 14	1000 bar / 14500 psi 350 bar / 5100 psi				900 bar / 13000 psi 280 bar / 4100 psi		

Proof Pressure Test - ⑧

Max. Allowable Working Pressure = Nominal Pressure

*SFC KOENIG's North American Engineering Department utilizes 2024-T4/T6 as a test base material.