

KOENIG RESTRICTOR® ORIFICE RESTRICTORS

Series RE

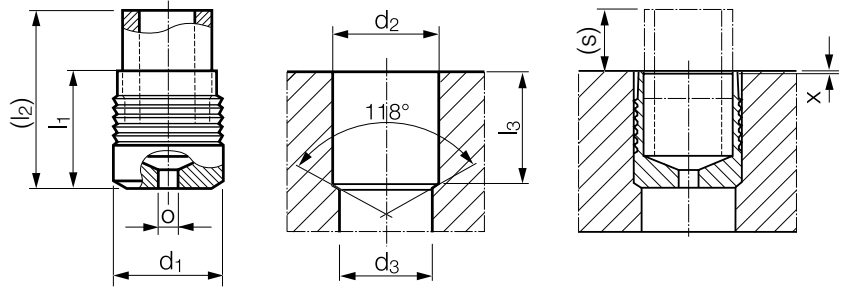


Material:

Sleeve: Stainless Steel AISI 303/304
Pin: Stainless Steel 17-4 PH

Part Number Key:

XXX is orifice diameter in hundredths of a millimeter, for example 127 for 1.27mm, with the decimal always in the same location



Part Number	d ₁	l ₁	(l ₂) ~ Ref.	o ±0.025 Orifice Diameter	d ₂ +0.10 0	l ₃ min.	d ₃ max.	(s) ~ Ref.	x ±0.3	Packaging Unit*
RE-040-XXX	4.0	4.0	6.0	0.40 - 1.27	4.0	3.9	3.3	2.0	0.0	1000
RE-050-XXX	5.0	5.5	8.2	0.40 - 1.91	5.0	5.4	4.3	2.7	0.0	1000
RE-060-XXX	6.0	6.5	9.9	0.40 - 2.54	6.0	6.4	5.3	3.4	0.0	1000
RE-070-XXX	7.0	7.5	11.6	0.40 - 3.30	7.0	7.4	6.2	4.1	0.0	1000
RE-080-XXX	8.0	8.5	13.3	0.40 - 3.81	8.0	8.4	7.2	4.8	0.0	1000
RE-090-XXX	9.0	10.0	15.5	0.40 - 4.32	9.0	9.9	8.2	5.5	0.0	1000
RE-100-XXX	10.0	11.0	17.1	0.40 - 4.95	10.0	10.9	9.2	6.1	0.0	250

Dimensions in millimeters

*Standard pack quantities may vary by sales organization

The weight depending on the orifice diameter

To calculate orifice diameter/length please refer to page 91

Not all items in stock – MOQ and production lead times may apply

PRESSURE PERFORMANCE

Series RE Inch	①	④	⑥	⑧
	ETG-100 / 44SMn28 AISI 1144	EN 1563: GJS-450-10 ASTM A536: 65-45-12	AlCu4Mg1 / EN AW-2024-T3 AA: 2024 T4/T6*	G-AISi7Mg / EN-AC-42100 ASTM/UNS: A356
	Base Material of the Installation			
Ø 4	120 bar / 1740 psi			100 bar / 1450 psi
Ø 5	180 bar / 2610 psi			150 bar / 2175 psi
Ø 6	210 bar / 3045 psi			150 bar / 2175 psi
Ø 7-8	210 bar / 3045 psi			180 bar / 2610 psi
Ø 9-10	Please Contact Us for Details			

Max. Allowable Working Pressure = Nominal Pressure

*SFC KOENIG's North American Engineering Department utilizes 2024-T4/T6 as a test base material.