

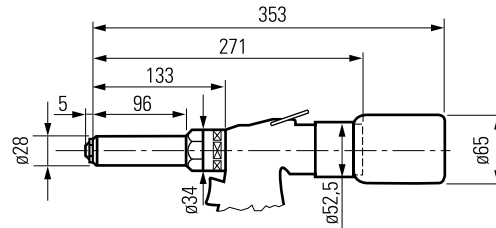


SETTING TOOL

EXTTOOL-040-2

Hydropneumatic Tool for Series LK / SK
with Mandrel Collection Device

EXTTOOL-040-2



TECHNICAL DATA

TYPE	EXTTOOL-040-2
Series	LK / SK
Order number	300160394
Weight	2.7 kg
Pull force at 7 bar	24 kN
Working stroke	18 mm
Air supply pressure (min. - max.)	5-7 bar
Air consumption at 5-6 bar	3.5 l
Noise level	< 75 dB(A)
Cycle time	2.0 s

REQUIRED ACCESSORIES: Please select based on the diameter of your EXPANDERS

TYPE	ORDER NUMBER
Nosepiece Expander Ø 12.0	LK / SK 300161931
Nosepiece Expander Ø 14.0	LK 300161932
Nosepiece Expander Ø 16.0	LK 300161933

Nosepieces not included

REPLACEMENT PARTS: Please select based on the diameter of your EXPANDERS

TYPE	ORDER NUMBER
Jaws Expander LK and SK Ø 12.0 - 16.0	300161930
Jaws case Expander LK and SK Ø 12.0 - 16.0	300161900
Jaws pusher Expander LK and SK Ø 12.0 - 16.0	300161905
Jaws pusher Expander LK / SK and SKC Ø 7.0 - 10.0	300161905

Replacement parts included